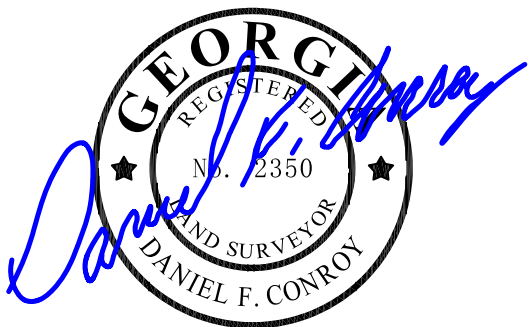


GRID NORTH  
GA WEST NAD 83  
DATUM NAVD 88

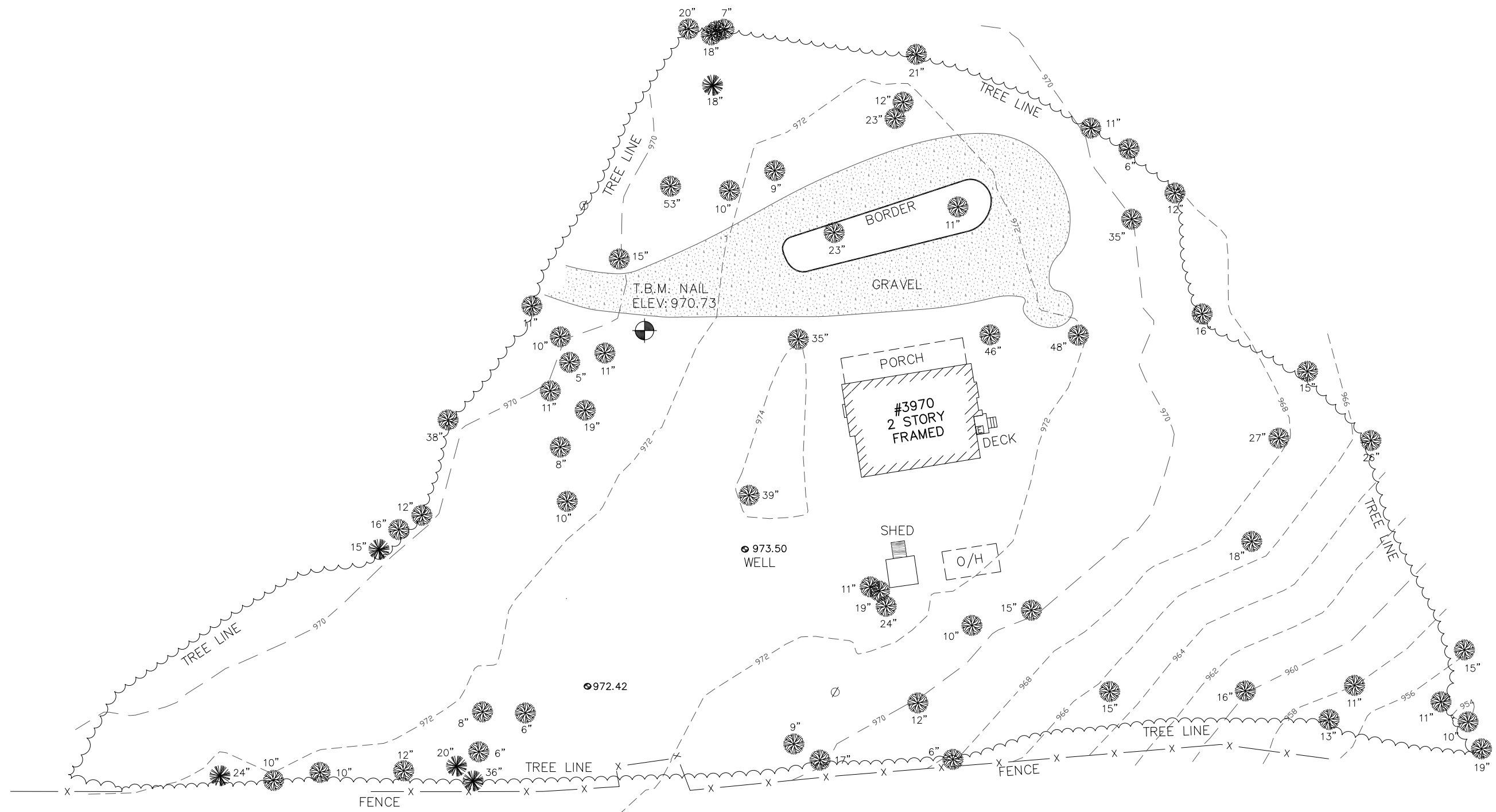
SCALE: 1" = 40'

THIS SURVEY IS A RETRACEMENT OF AN EXISTING PARCEL OF LAND AND DOES NOT SUBDIVIDE OR CREATE A NEW PARCEL. THE RECORDING INFORMATION OF THE DOCUMENT(S), MAP(S), PLAT(S) OR OTHER INSTRUMENT(S) WHICH CREATED THE PARCEL(S) ARE STATED HEREON. RECORDATION OF THIS SURVEY DOES NOT IMPLY APPROVAL OF THE LOCAL JURISDICTION, AVAILABILITY OF PERMITS, COMPLIANCE WITH LOCAL REGULATIONS OR REQUIREMENTS, NOR SUITABILITY FOR ANY USE OR PURPOSE OF THE LAND. FURTHER, THE UNDERSIGNED LAND SURVEYOR CERTIFIES THAT THIS MAP, PLAT, OR PLAN COMPLIES WITH THE MINIMUM TECHNICAL STANDARDS FOR PROPERTY SURVEYS IN GEORGIA AS SET FORTH IN CHAPTER 180-7 OF THE RULES OF THE GEORGIA BOARD OF REGISTRATION FOR PROFESSIONAL ENGINEERS AND LAND SURVEYORS AND AS SET FORTH IN THE GEORGIA PLAT ACT OCGA 15-6-6

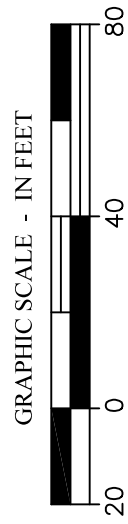


FOR THE FIRM  
BOUNDARY ZONE, INC.  
LSF #839  
NOT VALID WITHOUT  
ORIGINAL SIGNATURE

*Daniel F. Conroy*  
DANIEL F. CONROY PLS #2350 DATE 07/13/2021



NO.	REVISION	DATE
1		
2		
3		
4		
5		



**TOPOGRAPHIC AND TREE EXHIBIT**  
PREPARED FOR: CITY OF CLARKSTON  
PART OF TAX PARCEL 1809613007  
LAND LOT 96, 18TH DISTRICT  
DEKALB COUNTY, GEORGIA - 07/13/2021

<ul style="list-style-type: none"> <li>⊕ IRRIGATION CONTROL VALVE</li> <li>○ PROPERTY CORNER FOUND (AS NOTED)</li> <li>● 1/2" REBAR WITH CAP SET LSF# 839</li> <li>⊗ R/W MONUMENT</li> <li>⊕ FIRE HYDRANT</li> </ul>	<ul style="list-style-type: none"> <li>DE DRAINAGE EASEMENT</li> <li>⊙ MANHOLE</li> <li>⊕ CLEAN OUT</li> <li>⊕ WATER METER</li> <li>⊕ WATER VALVE</li> <li>⊕ POWER POLE</li> <li>⊕ LIGHT POLE</li> </ul>	<ul style="list-style-type: none"> <li>⊕ UNDERGROUND UTILITY MARKERS</li> <li>⊕ A/C UNIT</li> <li>⊕ GUY WIRE</li> <li>⊕ JUNCTION BOX</li> <li>⊕ OUTFLOW STRUCTURE</li> <li>⊕ DRAINAGE INLET</li> <li>⊕ POWER/LIGHT POLE</li> </ul>	<ul style="list-style-type: none"> <li>⊕ GAS VALVE</li> <li>⊕ CABLE BOX</li> <li>⊕ POWER METER</li> <li>⊕ POWER BOX</li> <li>⊕ REGULAR PARKING</li> <li>⊕ HANDICAP</li> </ul>	<ul style="list-style-type: none"> <li>CMP CORRUGATED METAL PIPE</li> <li>RCP REINFORCED CONCRETE PIPE</li> <li>L.L. LAND LOT</li> <li>N/F NOW OR FORMERLY</li> <li>R/W RIGHT-OF-WAY</li> <li>P/L PROPERTY LINE</li> <li>OH OVERHANG</li> <li>⊕ GAS METER</li> </ul>	<ul style="list-style-type: none"> <li>C.B. CATCH BASIN</li> <li>CNT CANTILEVER</li> <li>⊕ TELEPHONE BOX</li> <li>⊕ SIGN</li> <li>—W— WATER LINE</li> <li>—U— OVERHEAD UTILITY LINE</li> </ul>	<ul style="list-style-type: none"> <li>HDPE HIGH DENSITY POLYETHYLENE PIPE</li> <li>—S— SEWER LINE</li> <li>—G— GAS LINE</li> <li>—C— CABLE LINE</li> <li>—T— TELEPHONE LINE</li> <li>—□— FENCE LINE</li> <li>—920— CONTOUR LINE</li> </ul>	<ul style="list-style-type: none"> <li>DIP DUCTILE IRON PIPE</li> <li>BSL BUILDING SETBACK LINE</li> <li>CONC. CONCRETE</li> <li>EOP EDGE OF PAVEMENT</li> <li>BFE BASEMENT FLOOR ELEVATION</li> <li>GFE GARAGE FLOOR ELEVATION</li> <li>FFE FINISHED FLOOR ELEVATION</li> </ul>	<ul style="list-style-type: none"> <li>SSE SANITARY SEWER EASEMENT</li> <li>DB DEED BOOK</li> <li>PB PLAT BOOK</li> <li>PG PAGE</li> <li>POB POINT OF BEGINNING</li> <li>POC POINT OF COMMENCEMENT</li> <li>A.K.A. ALSO KNOWN AS</li> </ul>	<ul style="list-style-type: none"> <li>F.K.A. FORMERLY KNOWN AS</li> <li>NAD NORTH AMERICAN DATUM</li> <li>NAVD NORTH AMERICAN VERTICAL DATUM</li> <li>⊕ HARDWOOD TREE</li> <li>⊕ PINE TREE</li> </ul>
--	--	--	---	--	--	---	--	---	--

THIS SURVEY WAS MADE WITHOUT THE BENEFIT OF A CURRENT TITLE COMMITMENT. EASEMENTS AND ENCUMBRANCES MAY EXIST WHICH BENEFIT AND BURDEN THIS PROPERTY.

THIS PLAT WAS PREPARED FOR THE EXCLUSIVE USE OF THE PERSON, PERSONS OR ENTITY NAMED HEREON AND DOES NOT EXTEND TO ANY UNNAMED PERSON WITHOUT A RECERTIFICATION BY THE SURVEYOR NAMING SAID PERSON.

© COPYRIGHT 2021 - BOUNDARY ZONE, INC.  
THIS DRAWING AND ITS REPRODUCTIONS ARE THE PROPERTY OF THE SURVEYOR AND MAY NOT BE REPRODUCED, PUBLISHED OR USED IN ANY WAY WITHOUT THE WRITTEN PERMISSION OF THIS SURVEYOR.



SUWANEE (770) 271-5772  
454 SATELLITE BLVD, SUITE 200  
SUWANEE, GA 30024

ATLANTA (404) 446-8180  
1100 PEACHTREE STREET, SUITE 200  
ATLANTA, GA 30309

KENNESAW (678) 730-4393  
125 TOWN PARK DRIVE  
SUITE 300  
KENNESAW, GA 30144

PROJECT  
2386101

SHEET  
1 OF 1

DWN: BH