



City of Clarkston Clarkston Greenway Trail Phase I

Conceptual Design

Agenda

1. Introductions
2. Scope of Work
3. Proposed Trail Concepts
4. Proposed Montreal Rd. Concepts
5. Schedule
6. Questions & Answers

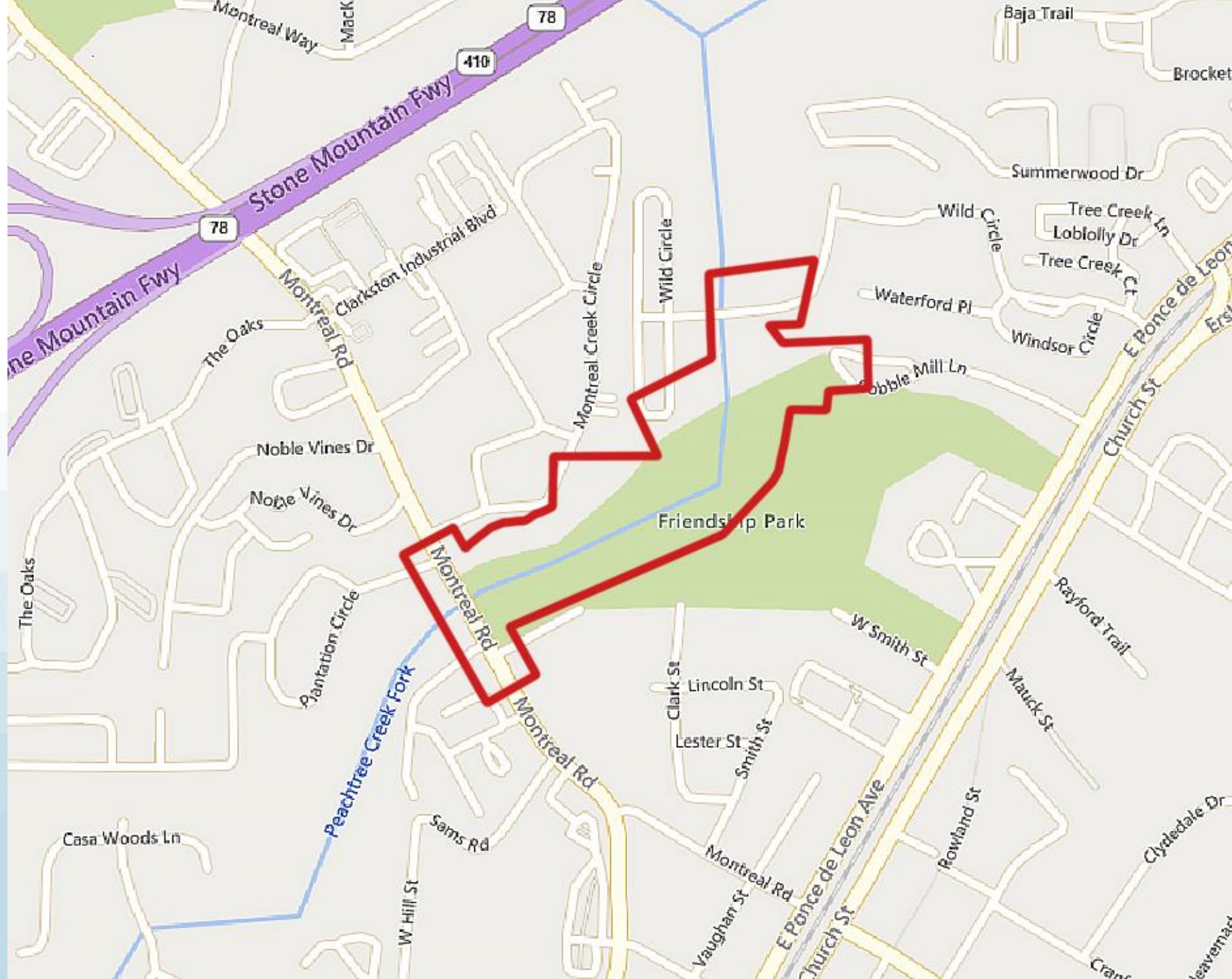
Scope

- Kick-off meeting: goals, schedule, permits, utilities
- Coordination: updates, stakeholder & steering meetings, City Council presentation
- Independent cost estimate and consultant estimate of preliminary trail alternatives (in progress, will bring back after first meeting with Trails Committee)
- Site visits and data compilation (GIS, environmental)
- Develop 4 preliminary alignments + 1 preferred alignment
- Conceptual design: cross sections, grading, drainage, utilities, amenities
- Renderings and 3D flythrough animation
- Final conceptual report and cost estimate
- GIS and survey database setup per GDOT specs
- Environmental resource identification and Phase I site assessment
- Survey data and collection; stake preferred final conceptual trail
- Coordination with DeKalb County on permitting
- Public engagement: PIOH, stakeholder meetings, steering committee meetings (1/27)
- Coordinating with Kimley Horn on Montreal Rd. Safe Streets For All Improvements
- City Council work session presentation
- GDOT concept study and report – completing GDOT requirements will allow the city staff to pursue federal funding for construction

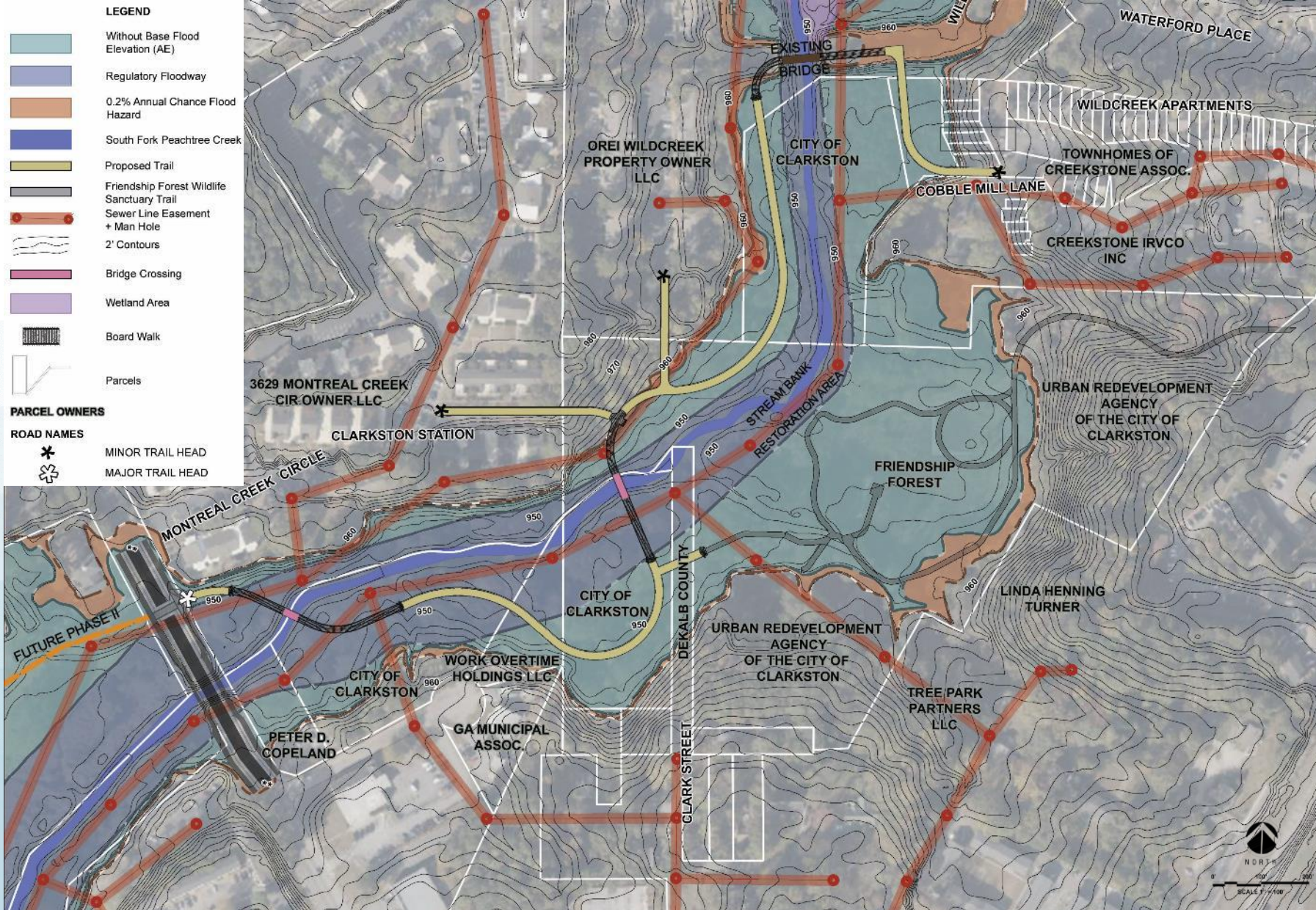
Steering Committee

- Amy Medford – Planning and Zoning Board
- Luay Sami – Clarkston Community Center
- Stephanie Solvig – Refuge Coffee Co.
- Jeremy Cole – Mosaic Health Center
- Samia Abdullee – Masjid Al-Monineen Board Chairman
- Niki Johnson – Atlanta Area School for the Deaf
- Ira Jenkins
- Luke Keller
- Josh Deaton
- Will Johnston
- Harrison Starks
- Julio Medina
- Jordaan Duffy
- Samuel Jakes
- Wildwood Apartments
- Creekstone Condominiums
- Plantation Apartments
- Dan Chapman

Project Area



Trail Alignment A – north entry, 2 bridge option



Pros:

- Location on the north side of the creek provides a direct connection to the future phase II trail improvements across Montreal Rd.
- Provides indirect connection to Friendship Forest Wildlife Sanctuary- Less direct impact to the park
- Provides the longest trail experience

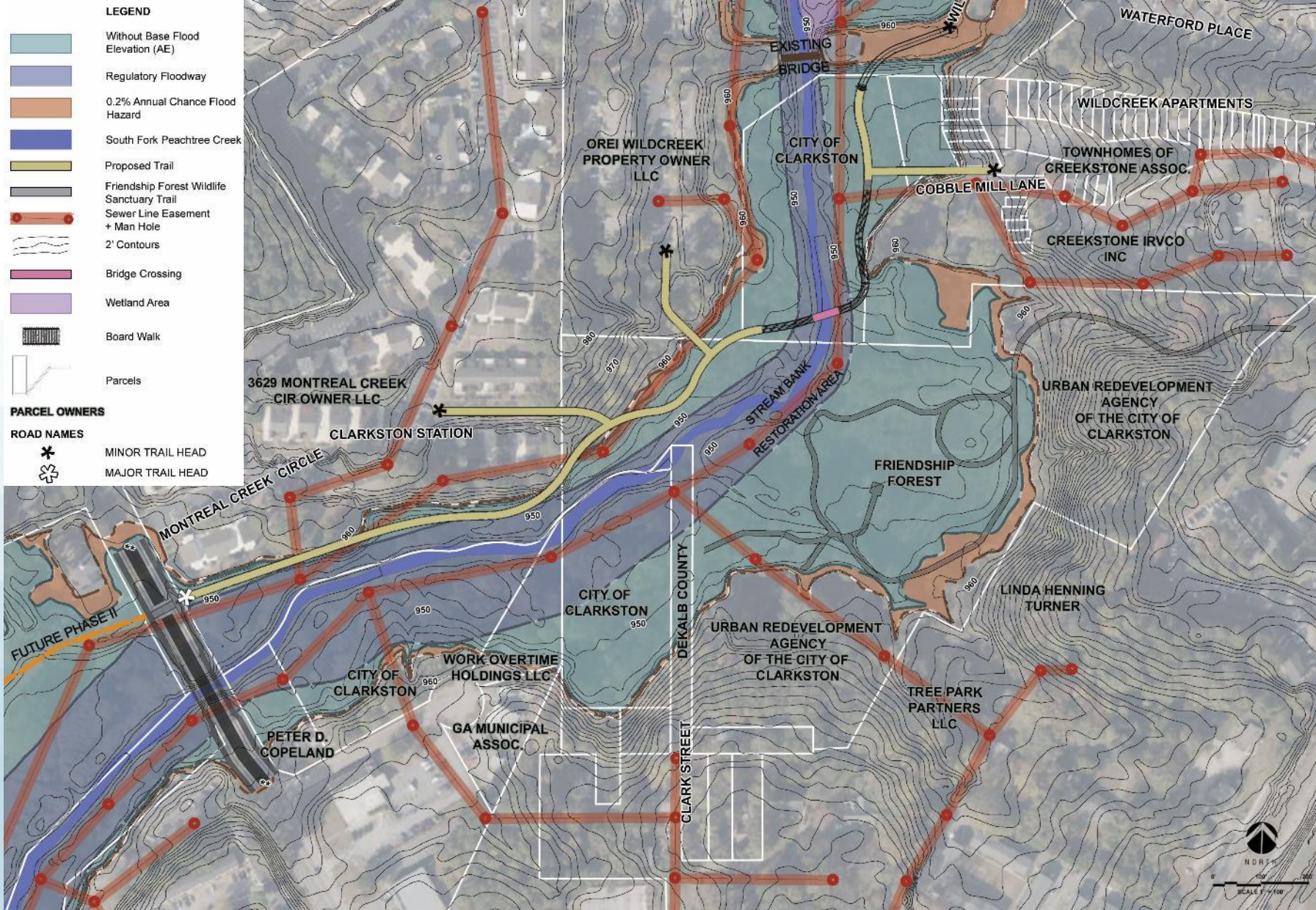
Cons:

- Most expensive alternative due to the board LF of boardwalk and two proposed bridges
- ID RW/Easement required from Montreal Creek Circle, Work Overtime Holdings, Orei Wildcreek, Townhomes of Creekstone

Linear Feet Breakdown

- Boardwalk: 760
- Trail: 2565
- Bridge: 150
- Total: 3475

Trail Alignment B – north entry, 1 bridge option



Pros:

- Only one main bridge crossing
- Shortest trail route
- North side entry

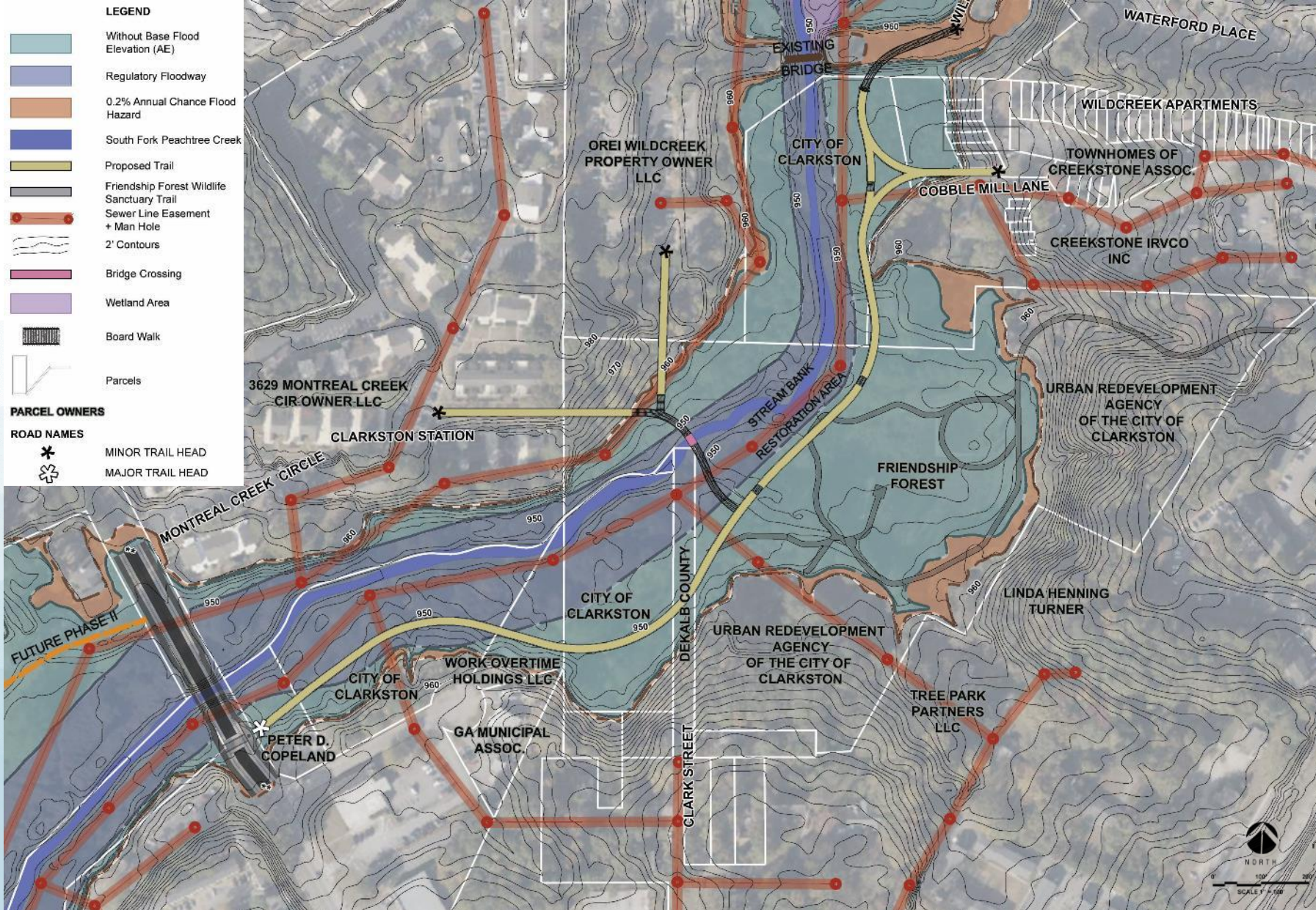
Cons:

- Does not provide a connection to Friendship Forest Wildlife Sanctuary
- Of the four alternatives, the trail experience will not be as long as others
- Significant north side topography will require extensive grading to construct the trail - the apartment buildings are closer to the trail and due to their elevation will be overlooking the trail.
- ID RW/Easement required from Montreal Creek Circle, Orei Wildcreek, Townhomes of Creekstone

Linear Feet Breakdown

- Boardwalk: 585
- Trail: 2210
- Bridge: 50
- Total: 2845

Trail Alignment C - south entry, forest option



Pros:

- Provides the least amount of boardwalk, making it one of the cheaper alternatives
- Located furthest from the creek, so it will experience the least flooding events
- Being located within Friendship Forest Wildlife Sanctuary will provide easier connectivity and access

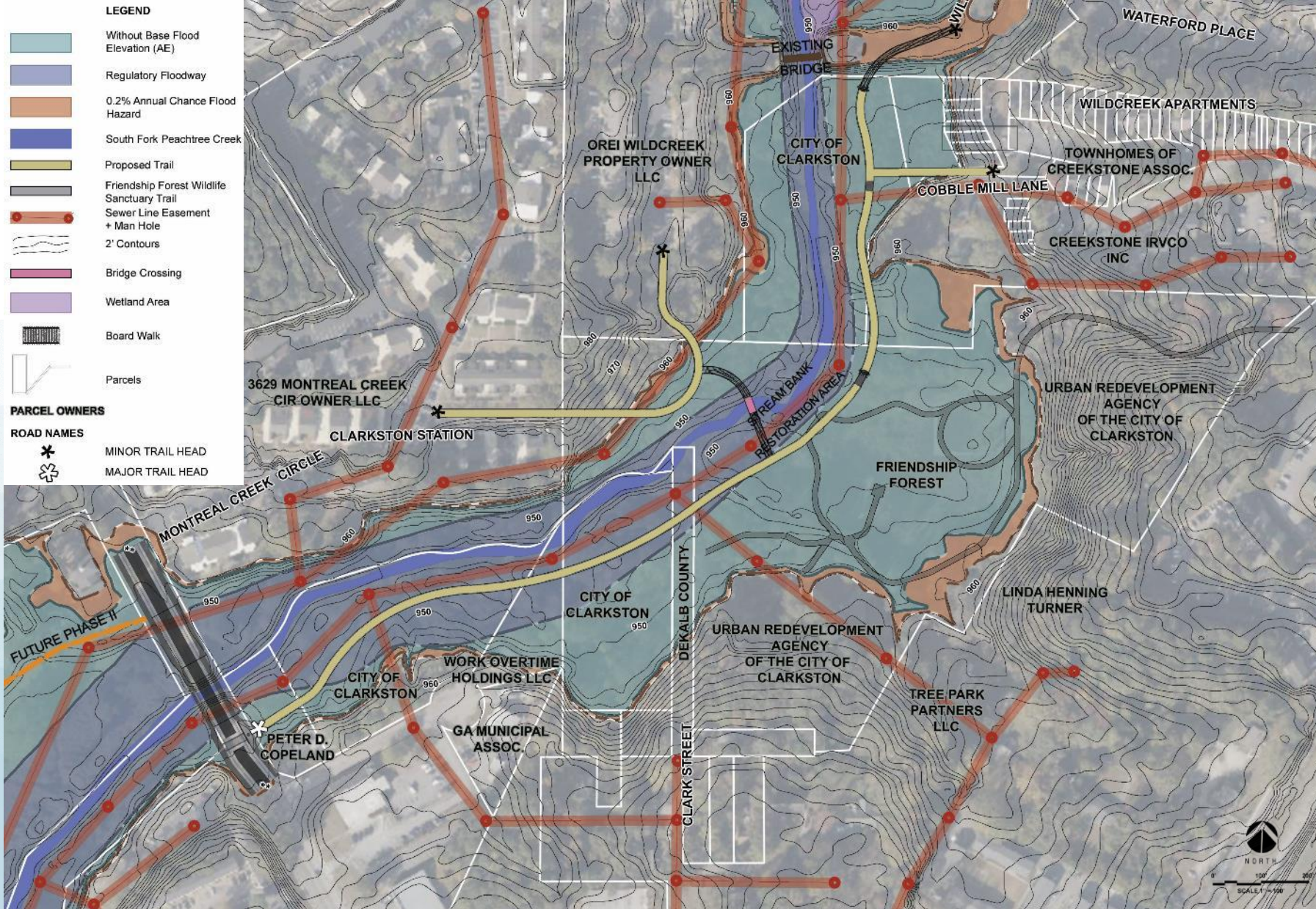
Cons:

- South of Friendship Forest Wildlife Sanctuary, users will not be able to experience the visibility of the creek
- The future phase II connection will have to travel north along Montreal Rd to transition to west side of Montreal Rd.
- ID RW/Easement required from Peter Copeland, Montreal Creek Circle, Work Overtime Holdings, Orei Wildcreek, Townhomes of Creekstone

Linear Feet Breakdown

- Boardwalk: 585
- Trail: 3000
- Bridge: 20
- Total: 3605

Trail Alignment D – south entry, creek option



Pros:

- One of the cheaper alternatives
- South of Friendship Forest Wildlife Sanctuary, the alignment provides more views of the creek
- Being located within Friendship Forest Wildlife Sanctuary will provide easier connectivity and access

Cons:

- The future phase II connection will have to travel north along Montreal Rd to transition to west side of Montreal Rd.
- ID RW/Easement required from Peter Copeland, Montreal Creek Circle, Work Overtime Holdings, Orei Wildcreek, Townhomes of Creekstone

Linear Feet Breakdown

- Boardwalk: 460
- Trail: 2870
- Bridge: 30
- Total: 3360

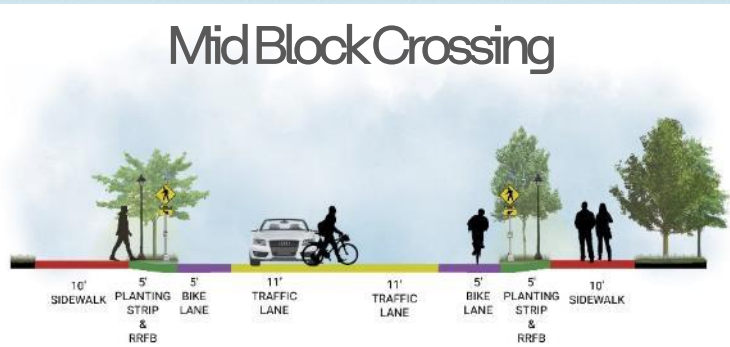
Montreal Road



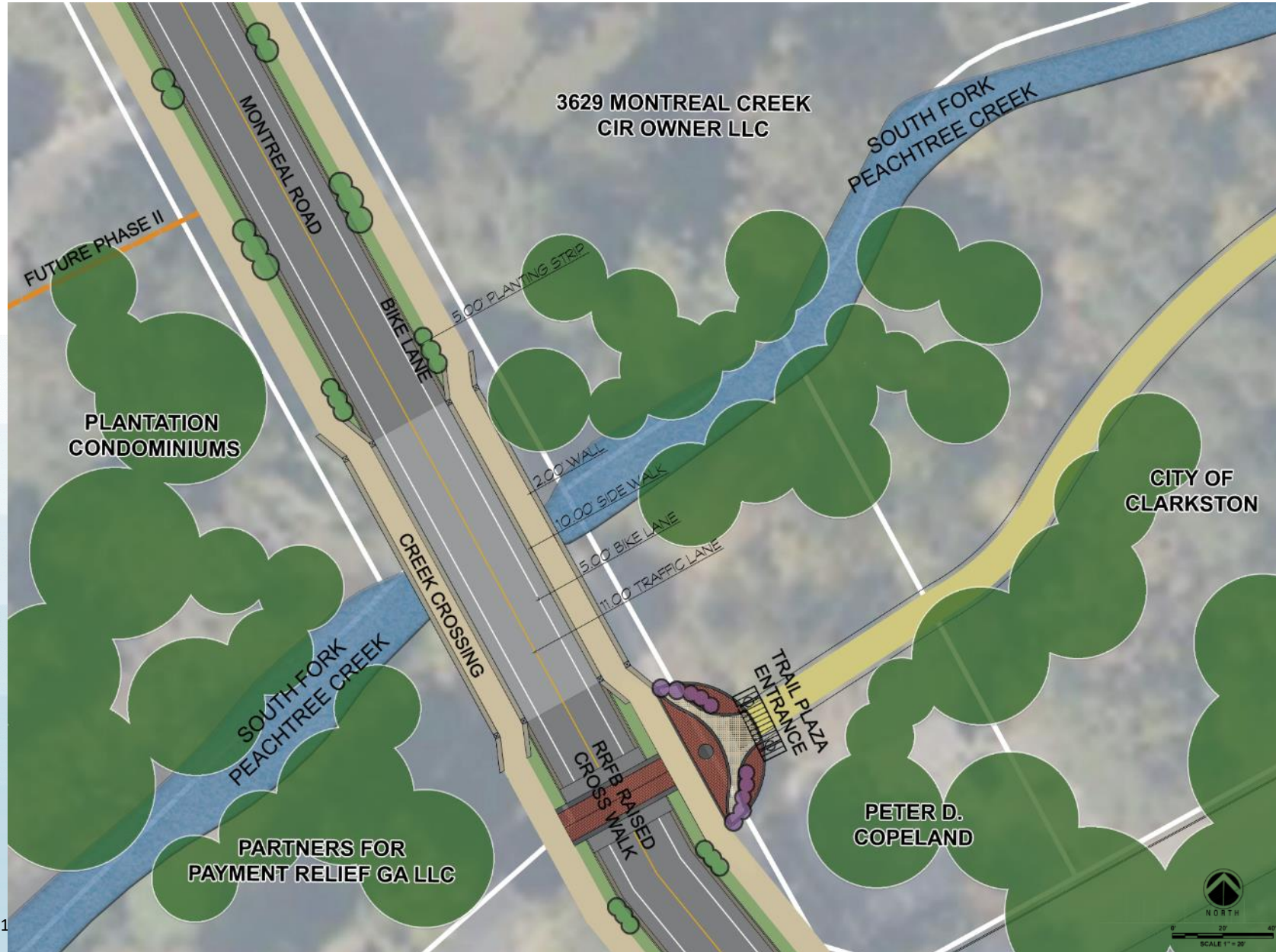
North Trail Head



Rectangular Rapid-Flashing Beacon



South Trail Head



Rectangular Rapid-Flashing Beacon

Typical Road Section



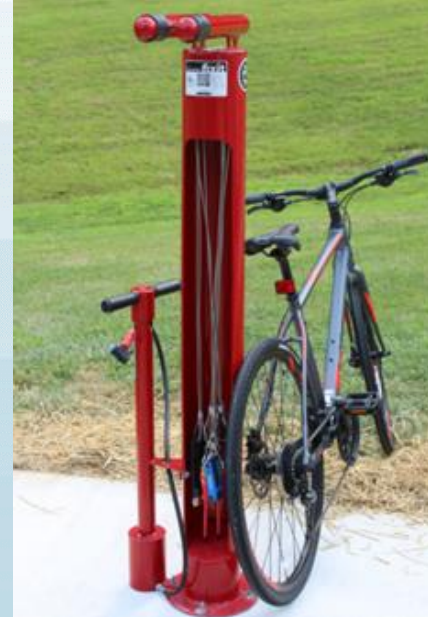
Major Trail Head Gateway



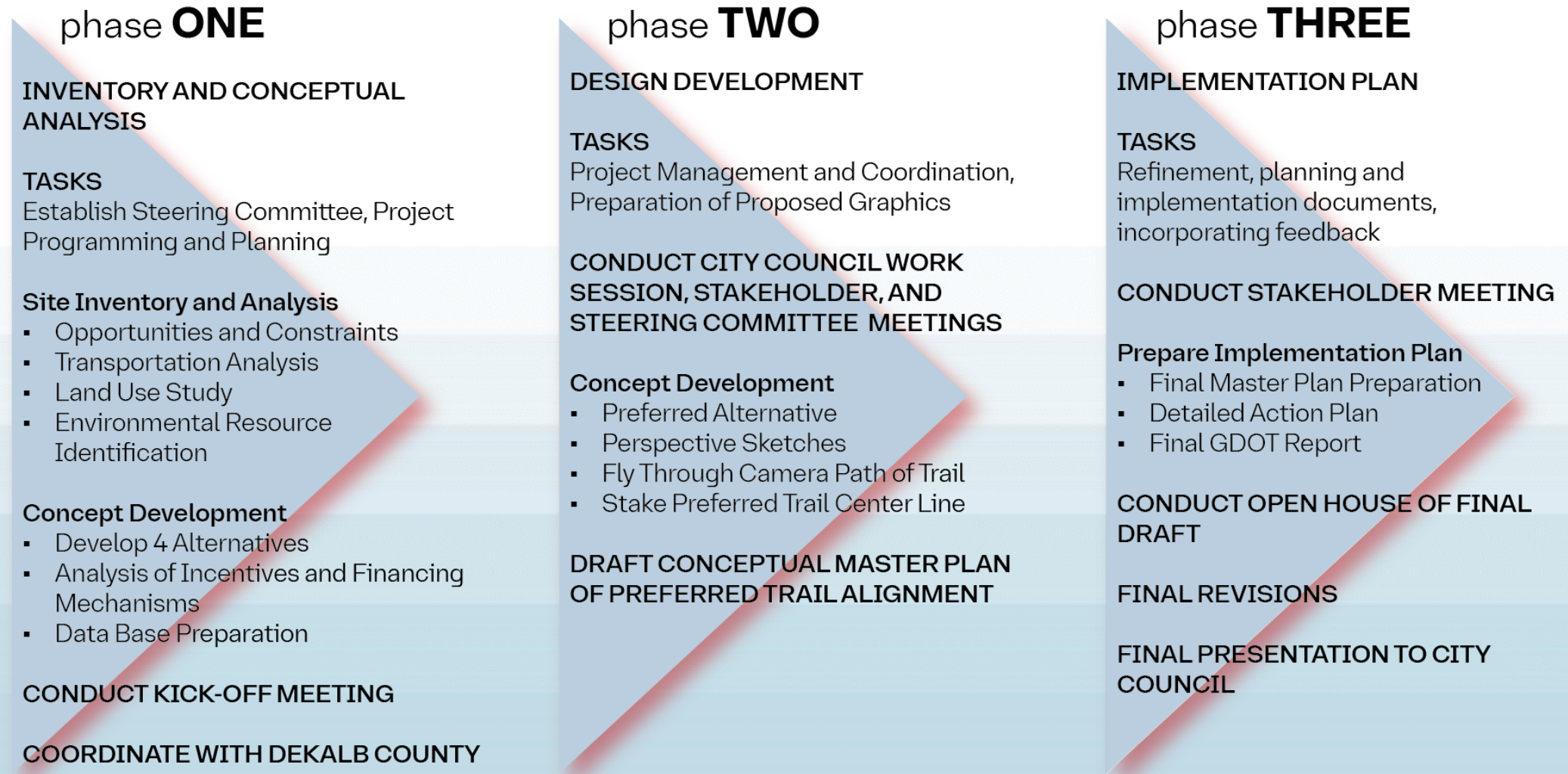
Minor Trail Head Gateway



Site Furnishings



Schedule For Conceptual Design



Questions

thank you